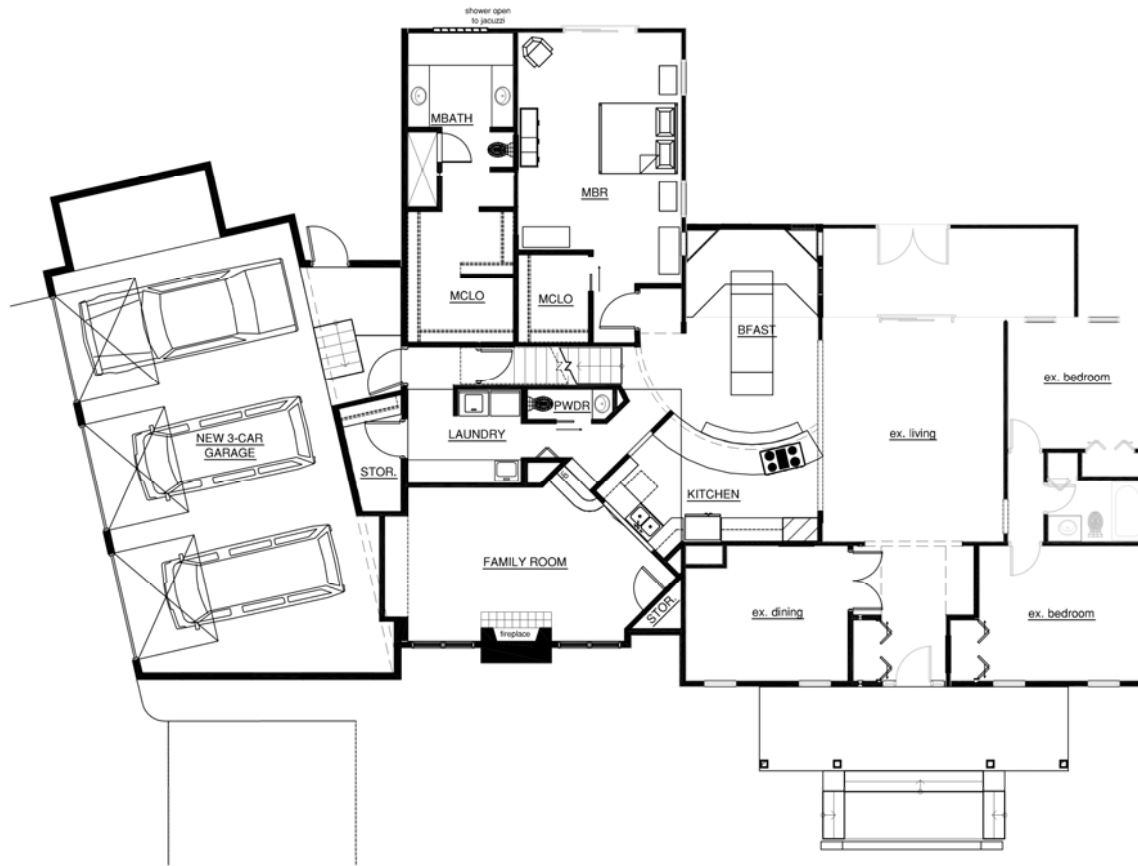


Residential Addition and Renovation



The owner is a contractor who originally built this as a spec home to sell, then decided to buy it himself. He consulted us to look at ideas on the following issues:

- Three-car garage addition situated at an angle to the house
- Turn existing garage into a family room
- Reconfigure the Master Suite
- Expand Dining Room and Kitchen
- Create a Unique Porch

One challenge with the angled garage addition was in getting the hip roofs to work on a wing at an angle to the house; the solution was to create two Boston Gables with dormer windows at the intersection of roofs. The kitchen was reconfigured to become an activity center between the family room and dining room. A barrel vault in the porch will continue as a vaulted ceiling into the house. Interiors and colors by The Plaid Rabbit, Michigan City.



cad-generated study model of front porch

