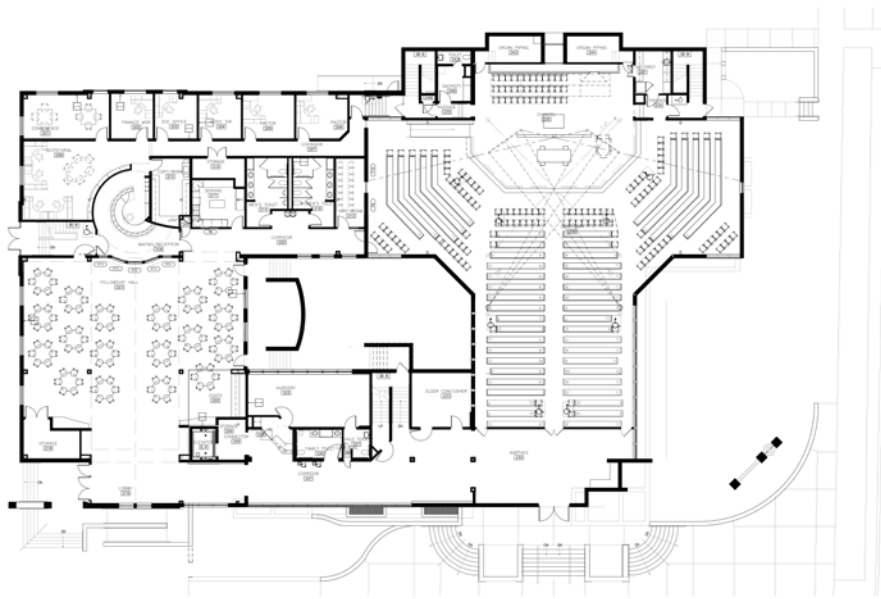
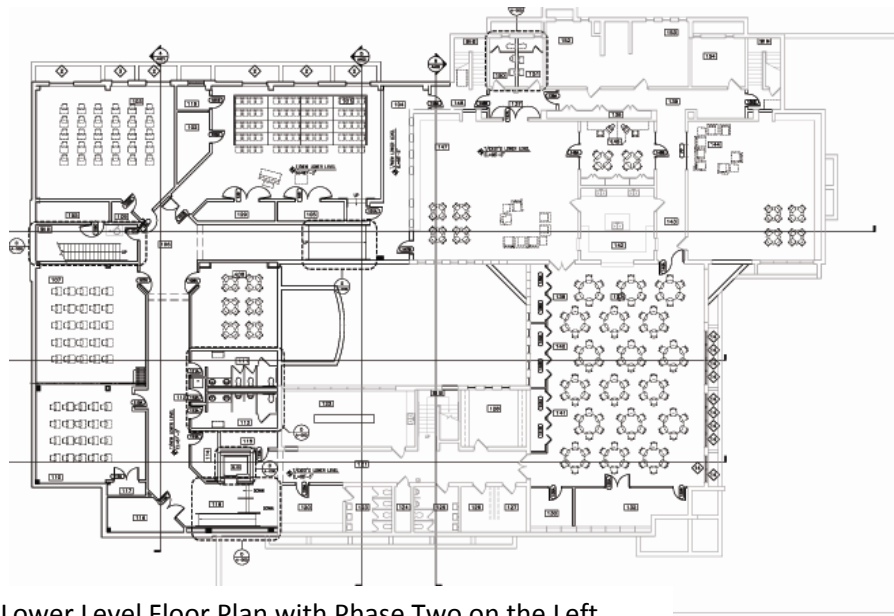


Saint Paul Lutheran Church



Main Level Floor Plan with Phase Two Left, Entrance Plaza Lower Right



Lower Level Floor Plan with Phase Two on the Left.

Work was done to an existing church built in 1960. The project began as renovation with an office and classroom addition, yet as the funding situation became realized it was decided focus on building renovation now and construct the addition in a second phase. The chancel was changed to a stage-like configuration, and the sanctuary was modified to better engage the side aisles, including two small angled expansions to unify these with the main sanctuary. ADA compliance of the lower level was a priority so an addition to accommodate an elevator was economically constructed. Phase two will wrap around this and create a scenic courtyard visible from a new fellowship hall. Project Team: Goss Pasma Architects, Berneche2 Architecture, CJW Engineers (mep/fp), Patrick Engineering (site)